

# ETDOOR remote program

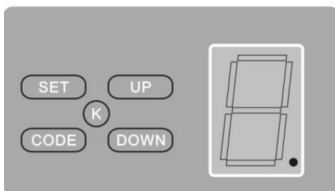


FIG.A

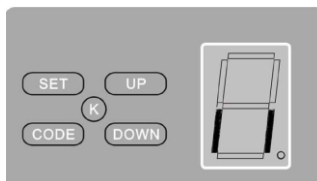


FIG.B

## Tune-in

Press 'CODE' button and hold on until the LED dot is on. (Fig. A) Then press any button on the transmitter once, the dot will be off; press the button again the dot will fast flash then LED displays '11' (Fig. B). After that the transmitter will be available.

## Delete

Press 'CODE' button more than 8 seconds until the LED displays 'C', all the stored codes will be deleted.